

# Office to let

## Victoria Center

Bucharest, Sector 1, 145 calea Victoriei



### Building information

Building status	Existing
Year of construction	2009
Parking ratio	1 / 90 sq m
Total building area	8 121 sq m

### Commercial terms

Office space*	after login *
Parking	after login *
Service charge*	after login *
Minimum lease term	after login *
Availability	after login *

\* Asking terms for m<sup>2</sup>/month

### Location



### Available space

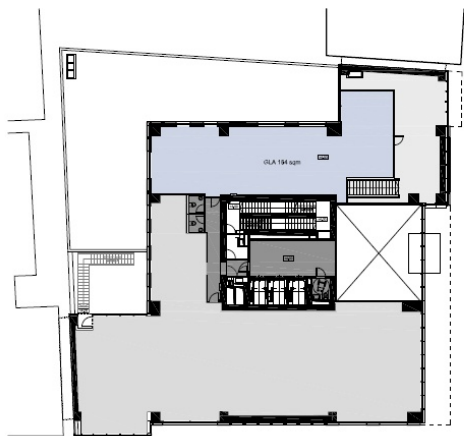
1 383 sq m

Available office space

515 sq m

Minimum office space

## Typical floor plan



## Available space

Floor	Vacant space	Availability
2	please contact us *	please contact us *
3	please contact us *	please contact us *
Total	after login *	

## Public transport

Metro: M1, M2

Bus: 133, 361, 381

Tram: 42, 45, 46, 24

Contact



+40 21 302 3400

More information